



## Sandwich Legger Press

Model 471/481/491SA  
with K693 or 694



Excellent Finish - Sharp Creases  
Finishes Both Pant Legs in One Lay  
Press Designed to also Finish other Garments  
K-602 Center Leaf Kit available for other "C" Series Leggers  
Center Leaf Holds First Leg While Dressing Second Leg  
Increases Production up to 50% without Sacrificing Quality  
Center Leaf Designed to give Maximum Steam and Vacuum Flow  
Center Leaf easily Raises and Lowers; Held in Upward and  
Downward Position with a Spring

[www.forentausa.com](http://www.forentausa.com)

Tel: 423-586-5370 • Email: [info@forentausa.com](mailto:info@forentausa.com)

Made in USA

# Models: 471SA, 481SA & 491SA

## Electrical Requirements

Voltage: 100-240VAC, 1PH, 50/60Hz, 0.35-0.19 Amps

Electrical Requirements with optional Built-in Vacuum

Voltage: 110-120VAC, 1PH, 60Hz, 8.4 Amps

Voltage: 220VAC, 1PH, 60Hz, 4.3 Amps

## Steam, Air, Vacuum & Water Requirements

Steam Inlet

Steam Outlet

Rec. steam pressure

Steam consumption @ 80psig(552 kPa)

Compressed air

Air consumption

Rec. air pressure

Vacuum Connection

Water Inlet (for optional water spray)

Weight (crated)

Shipping

NPT 1/2"

NPT 1/2"

PSIG 75-85

MPA 0.52-0.59

BHP 1.5

kg/hr 23.5

lb/hr 51.8

NPT 3/8"

free air/cycle at 80psig

free air/cycle at 0.55MPa

PSIG 80

MPa 0.55

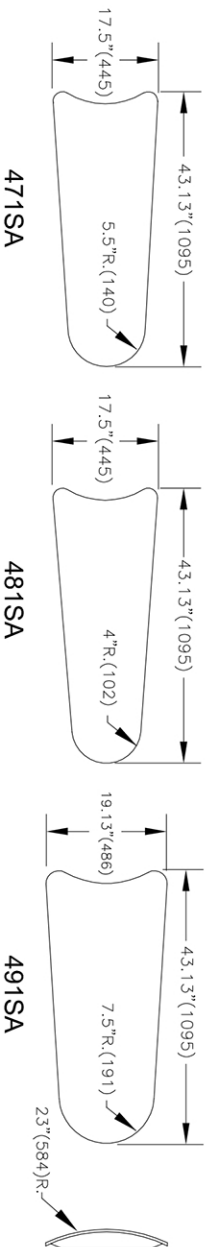
NPT 1 1/4"

NPT 1/4"

lbs 740

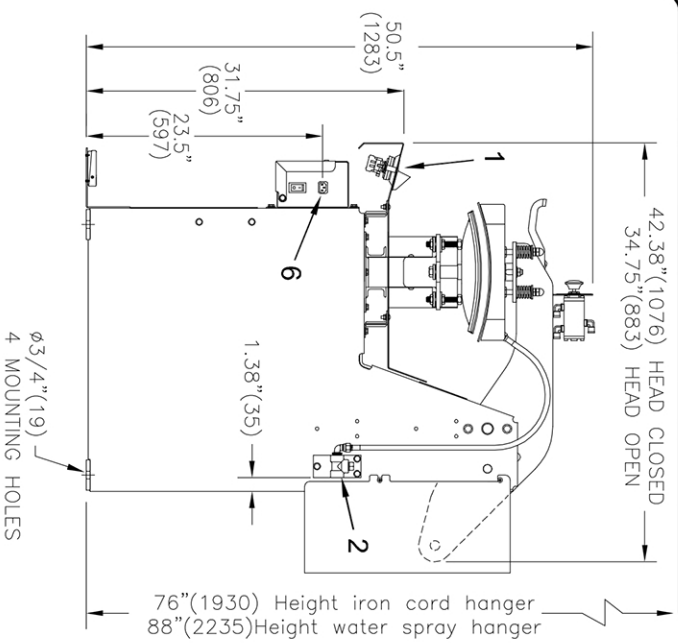
kg 335

## BUCK DIMENSIONS (unpadded)

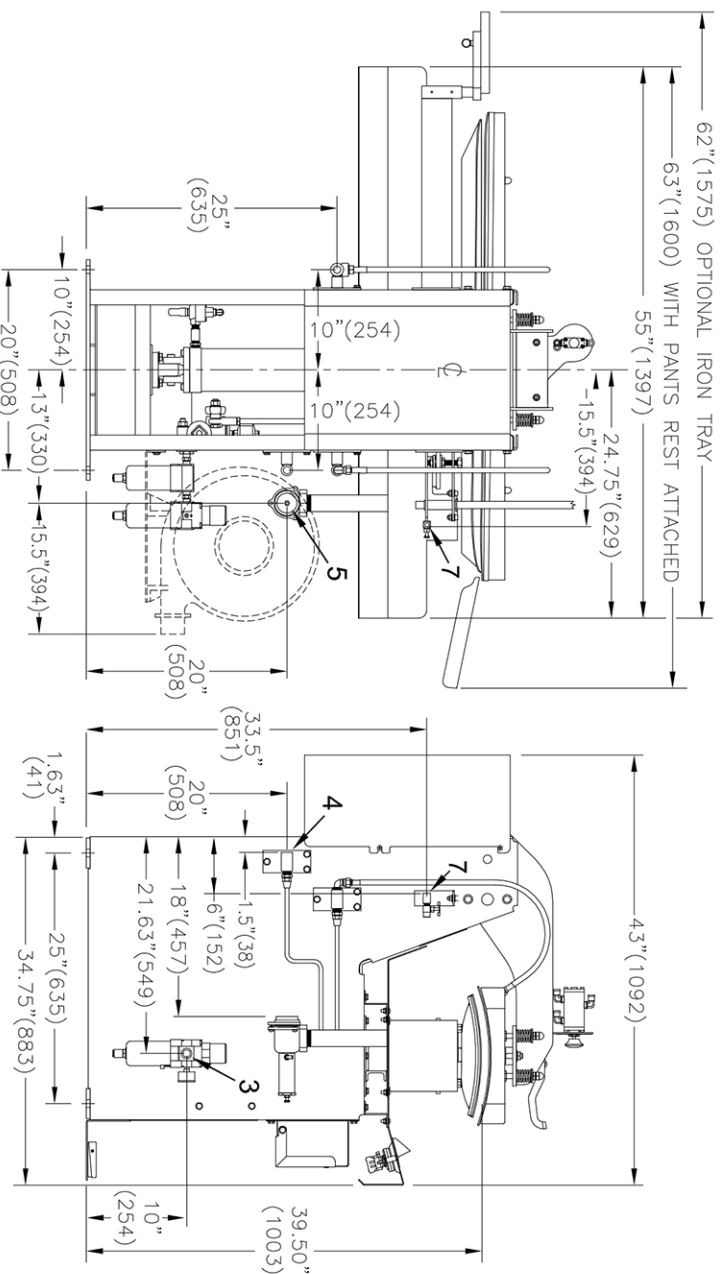


## Detail Line Drawing (millimeters shown in parentheses)

- 1 - Control Push Buttons
- 2 - Steam Inlet connection
- 3 - Air connection
- 4 - Steam Outlet connection
- 5 - Vacuum Connection
- 6 - Electrical Connection (7'6" ~ 3 Prong Electrical Cord)
- 7 - Water Connection (For optional water spray)
- 8 - Optional Built-in Vacuum



RIGHT SIDE VIEW



REAR VIEW

LEFT SIDE VIEW