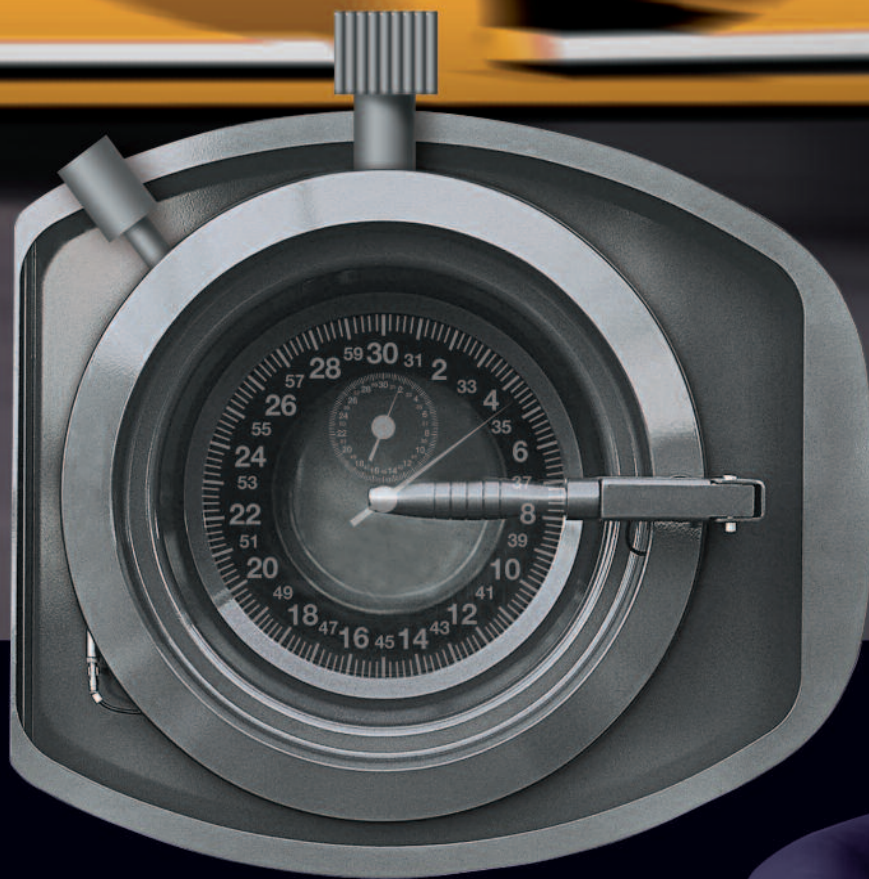


Fast. Smart. Clean.



UNION XL-XP 8000 SERIES



The Ideal Drycleaning System



Always we follow the path of excellence.



Since it was founded in 1976 **UNION** has always been recognised as the industry bench mark by which all other manufacturers' machines are judged.

UNION's leadership is evident in the field of research and development of new products and processes and even more tangible in the high quality machinery production phase. All company functions are carried out by our dedicated skilled managers and a creative industrial team using the most sophisticated facilities resulting in a state of the art product.

The vast and modern company infrastructure of the **UNION** organisation includes **CAD CAM** planning offices, research and development centres and a production complex equipped with the most modern technology, such as automated laser cutting and welding equipment and a meticulous assembly plant and testing facility. Our in-house technical support and training centre is always ready to support our worldwide distributor sales network.

UNION's commitment to the quality and reliability of the company's products is based on a self-sufficient structure. More than 80% of components used in the construction of **UNION** machines are manufactured within the **UNION** organisation.

Every component produced is tested and certified to ensure the highest quality of **UNION** products. Today **UNION** Drycleaning machines can be seen in over 120 countries around the world, marketed and supported by over 275 authorised distributors.

At **UNION** we are aware of the responsibilities this primacy imposes on us, so with our total commitment to our products and constant attention to detail we will help your business to move ahead in terms of quality and profit by ensuring that our products are manufactured to the finest possible standard.

H I S T O R Y

Q U A L I T Y

T E C H N O L O G Y

R E S E R C H

I N N O V A T I O N

S A F E T Y

The XL-XP 8000 Series



The Ideal Drycleaning System.

The achievements of a leadership which has lasted for 30 years are clearly reflected in the new **UNION XL** and **XP 8000 Series** machines.

Innovation and safety initiatives, leading to faster production, lower maintenance costs, reduced energy consumption, easy to use control devices and robust environmental protection.

These are the characteristics which make the **UNION XL-XP 8000 Series** the ideal machine for the professional user

The XP and XL 8000 Series machines are the outcome of a project at the forefront of technology built on many years of research and development enclosing the most highly developed and productive machine within an extremely small footprint.

Think about shops where every last inch of space is vital. All of this translates into low installation and running costs while demonstrating new standards of quality and performance.

From the introduction of the **DIALOG** computer to the advanced **IDROMATIC** still cleaning system, always fully addressing our environmental responsibilities, the **UNION XL** and **XP 8000** give a new meaning **to speed, efficiency and cleanliness**. Whichever model you choose from the **XL** or **XP 8000 Series**, it will be the perfect system for you.



Superior Technology for Advanced Performance.

The new **DIALOG** computer contains in its memory pre-installed programmes to respond to any type of cleaning process you need. These can easily be customised by the operator following a few simple instructions.

All system control parameters are constantly reported to the **DIALOG** computer's control panel in a clear and easily understandable way. The **DIALOG** computer features easy to read, simple to access menus, and continually displays the more significant operational data during the cycle, such as the elapsed time from the start and the time remaining to the end of the cycle, the inlet and outlet temperatures of the drum and much more information.

The new **DIALOG** computer permits you to store on the memory card every single programme parameter as well as periodical machine maintenance when required. All of the data and processing phases can be memorised in order, according to date and time, and can be stored on any personal computer for subsequent easy consultation and for the creation of tables of statistics to provide certification for the end user.

All of the new **UNION XL-XP 8000 Series** are built with a comprehensive control panel for immediate reading of every work phase.

The more important components and the illuminated sight-glasses have been strategically placed to allow easy "at a glance" observation of the process.



The loading door, made of an aluminium alloy, is conveniently large and has been given a safety locking system controlled by the **DIALOG** computer which prevents access to the machine before the end of cycle, allowing all residual solvent vapours to be completely removed from the clothes.

The loading door opening angle is maximised to ease the loading and unloading of clothes. The loading door and drum have been designed to optimise air flow within the cage allowing highly effective circulation of air thus enabling easy control of temperature and allowing a faster drying times and an efficient cooling system. Furthermore it is possible to rinse clean the back wall of the drum to remove lint, ensuring that peak performance is maintained throughout the long life of the machine. The careful design of the cage front will avoid buttons and other objects being damaged during the cycle.



New **UNION** innovations for a "winning plus" ideal.

The integrated control system **DIALOG** represents the interface proposed by **UNION** to optimise performance of our drycleaning machines. The large bright screen of the **DIALOG** computer displays all information regarding the functions of the programme and the condition of the machine components. The **DIALOG** computer is equipped with the useful "Programmed maintenance" facility which reminds the operator to carry out the very basic maintenance required to allow the machine to perform to perfection during every load. Today this revolutionary system is used on all new models of the **XL-XP 8000 Series**.

With the **DIALOG** system you can use the many memorised programmes and also modify them in part without having to rewrite the entire programme. This saves precious time and avoids tedious repetition. You can input and modify similar types of values for every single phase of every programme and once saved the

faultlessly reproducing the same process cycle in exactly the same detail, guaranteeing consistency to a standard never previously achieved.

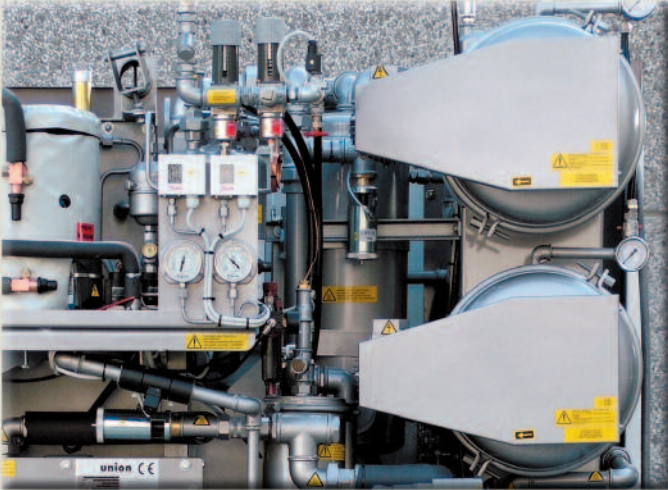
DIALOG permits the control and individual monitoring of every useful temperature during the cycle, drying temperatures, solvent temperatures including inside the still and even inside the still heating jacket. Also the cooling water temperature plus many more.

The **DIALOG** permits the start of the cycle to remain in pause until the correct pre-selected temperature has been reached, it will also permit the automatic selection and addition of the correct quantity of soaps and additives ..and with a single command you are given the option to manually prolong any step of the programme which you are using. Upon request the **DIALOG** system has at its disposal a number of different memory cards, enabling updates of system software or the copying of downloaded data from the work cycles, speedy entry of newly prepared programmes which are immediately ready to run on the machine saving precious time.

This is why today we call it **DIALOG**, tomorrow you'll call it indispensable.



Advanced Technology for Ultimate Efficiency



The **UNION XL and XP 8000 Series** machines can be supplied with a range of solvent filtration systems to provide a perfect match to the requirements of their proposed working environment.

The rotary self cleaning filter disks are made of nylon and have a large surface area. They can be supplemented by high capacity active carbon decolouration filters to ensure effective filtration of the solvent resulting in extreme solvent purity during the cycle.

The **DIALOG** computer will automatically select the filter to be used according to the program chosen.

The original automatic **IDROMATIC** still cleaning system designed by **UNION** is capable of completely removing distillation residues from the still and transferring them to the still waste container.

Should the operator wish to open the still door, the solvent vapour in the still is passed over the refrigeration coils and removed from the air, thus avoiding operator exposure.

The automatic cycle of this extraordinary system will even clean the internal walls of the still without having to open the still door. The walls of the still are sprayed with a jet of solvent leaving the still completely clean and ready to continue it's work without any manual intervention by the operator.



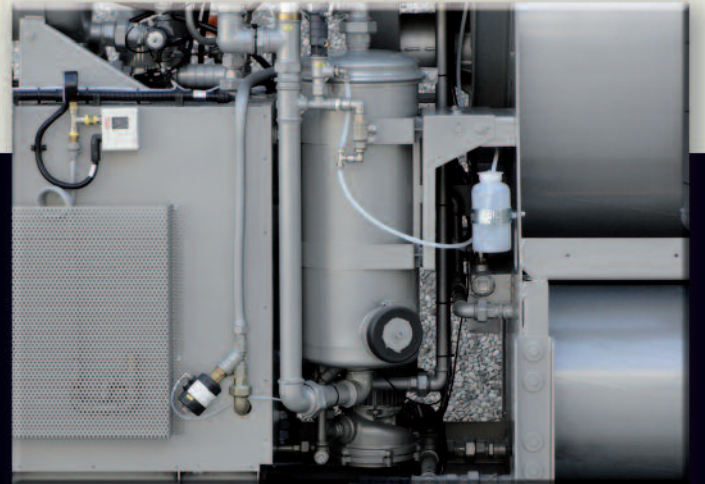
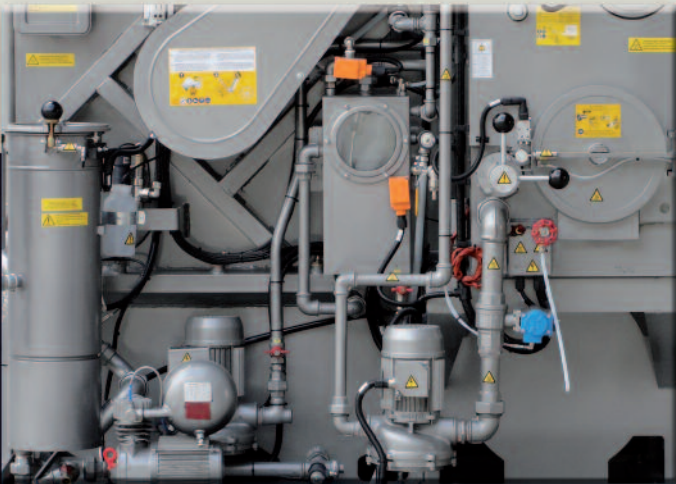
The new recovery circuit equipped with a high power ventilation system will drastically reduce drying time compared to models currently in the market. For total protection of the refrigeration unit all models of the **XL and XP 8000 Series** are fitted with a double air filter which is easy to inspect and clean through access to one convenient panel.

The daily maintenance activities are made through a single panel which provides easy access to the air filters.

The new **UNION** models **XP & XL 8000 Series** are equipped with the **RECUPER** Active Carbon filter integrated into the system in order to save precious space. The **RECUPER** volume is sized according to the capacity of the machine.

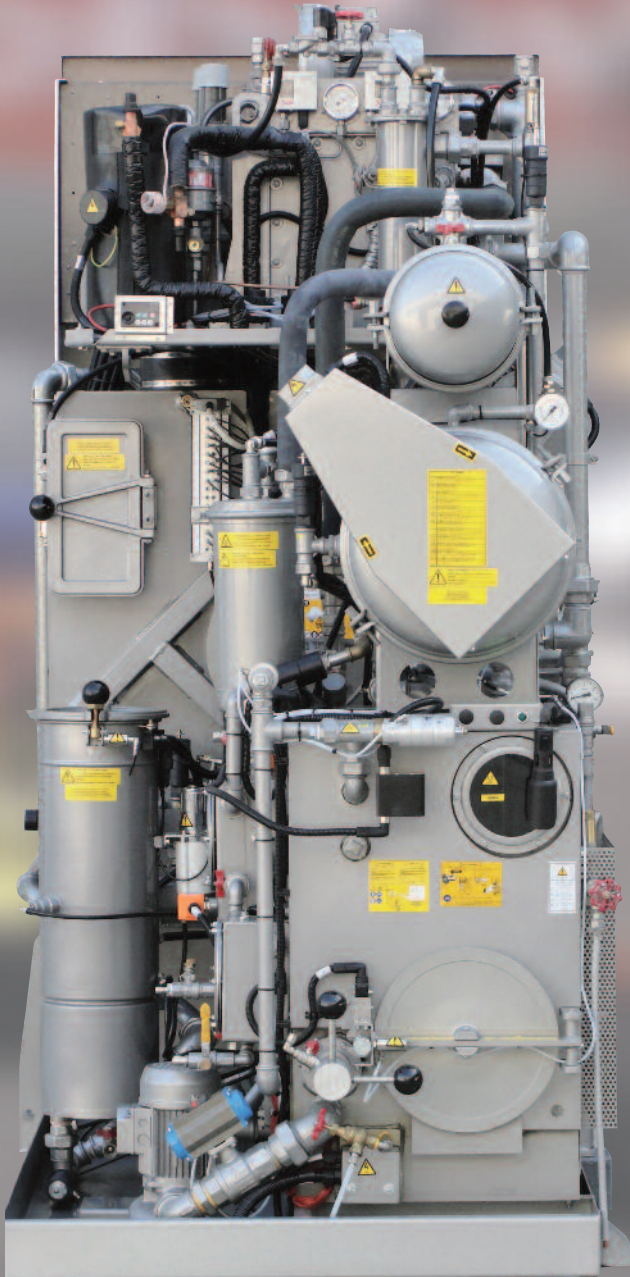
The **RECUPER** functions automatically in the final stages of the cleaning cycle, removing the final traces of solvent vapour before allowing the loading door to be opened. This further avoids operator exposure to the residual solvent vapours within the machine.

Besides reducing the solvent consumption, the system will contribute to maintaining a healthier working environment without any unpleasant odours.



The Ideal Drycleaning System.

UNION XP8012E, XP8015E, XP8018E Series, space saver Fast. Smart. Clean.

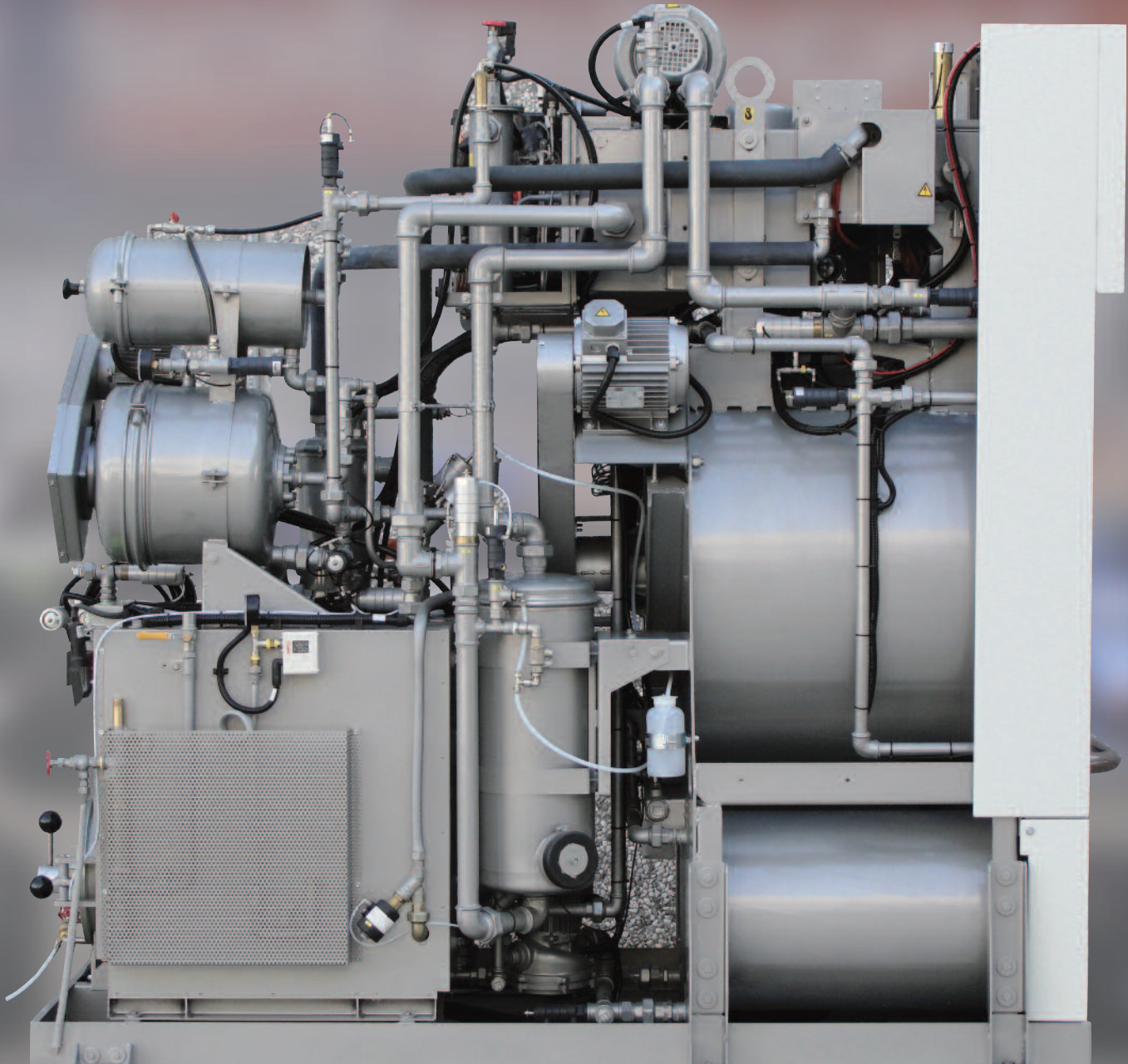


The UNION models XP8012E, XP8015E, XP8018E of 12, 15 and 18 kg loading are the ideal drycleaning machines for shops with limited space and are therefore also perfect for use as auxiliary machines to add to existing units and increase working capacity. The UNION models XP8012E, XP8015E and XP8018E are designed to facilitate continuous distillation cycle processes. The still with its built-in boiler is able to return a wash of solvent before the end of the machine cycle, allowing repeat distillation loads to be run or allowing you to switch off the machine at the end of the cycle thus avoiding long delays waiting for the solvent to be returned from the still. This feature will also be of use in special applications such as coin operated machines in laundrettes. The UNION XP8012E, XP8015E and XP8018E systems include all the innovations and technical advances which are exclusive to the UNION XL & XP8000 Series enclosed within the smallest practical footprint. All XP 8000 Series models are equipped with two independent self-cleaning solvent tanks equipped with level control sight-glasses. The new button trap design, self drying to reduce solvent emission during maintenance operations, offers excellent protection for the solvent circulation pump during the cleaning cycle.



The Ideal Drycleaning System.

UNION XP8012E, XP8015E, XP8018E Series, space saver Fast. Smart. Clean.



Phenomenal washing quality, excellent efficiency, consumption and performance and environmentally friendly.

Rational design for easy access to all components. The Nylon rotary filter disks can be supplied with an active Carbon decolourator filter. The carefully planned layout allows easy access to the air filters and to the button trap.

The automatic distillation system **TURBO FAN** is integrated into the **IDROMATIC** system.

The **DIALOG** computer will help you work more efficiently and will manage all **UNION** special features to even further improve machine performance.

The two stage gravity water separator is fitted with two level control sight-glasses.

The efficient and powerful refrigeration system is designed to improve drying performance while maintaining low energy and water consumption.

The **RECUPER** air purifying system is incorporated in the **SMART** models.

IDROMATIC automatic still cleaning system.

The air solenoid valves are conveniently located for ease of servicing when required.

High capacity well proven solvent pump.

The principal components are all manufactured in stainless steel, all pipelines are manufactured using brass and stainless steel components. The solvent security tray is built in heavy gauge galvanised steel.



The Ideal Drycleaning System.

UNION XL8012E, XL8012S, XL8015E, XL8015S Series, space saver Fast. Smart. Clean.



Exceptional washing quality, excellent consumption performances and environment friendly, the **UNION** models XL8012E, XL8012S, XL8015E and XL8015S Series are fitted with two or three solvent tanks with a capacity of 12kg (XL8012E and XL8012S) and 15kg (XL8015E and XL8015S).

The large loading door is built in aluminium. The revolutionary design of the washing cage and the advanced new air tunnel produces phenomenal drying results. For **UNION** models XL 8000 Series the technicians have developed a new, high efficiency drying tunnel to reduce the drying cycle, guaranteeing perfect results with a short process time and lower operating costs.

The construction is compact, provides easy access to the front control panels and to all electrical and electronic internal components.

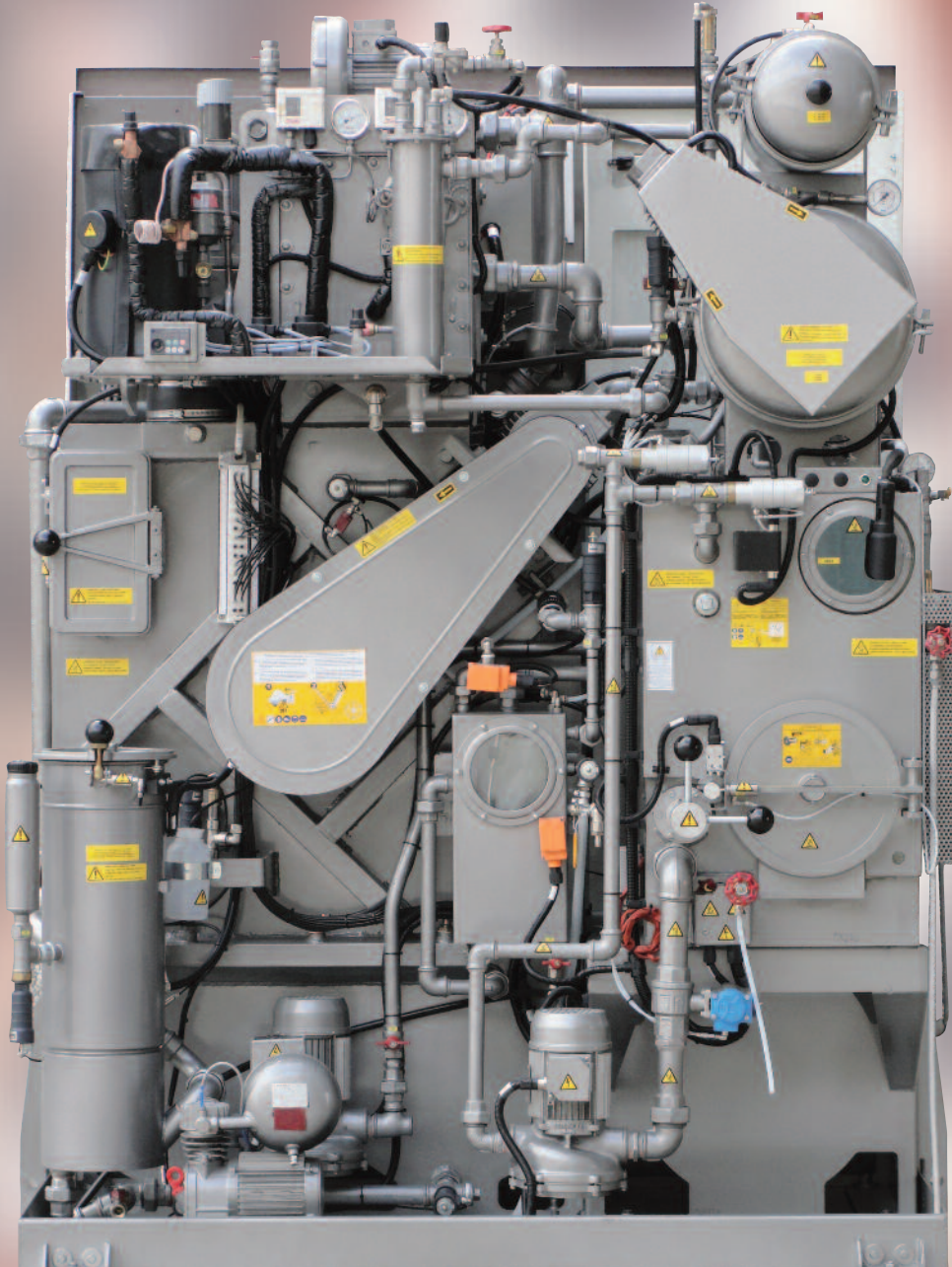
The illuminated solvent sight-glass is placed on the front panel to show the solvent flow during the washing cycle and the general level of cleaning.

All models XL8000 Series are built with new design independent and automatically self cleaning solvent tanks and level control sight-glasses.



The Ideal Drycleaning System.

UNION XL8012E, XL8012S, XL8015E, XL8015S Series, space saver Fast. Smart. Clean.



Rational and ergonomic design for easy access to all components and for fast maintenance.

One of the nylon rotary filter disks can be combined to active-carbon filters for improved cleaning performances.

Comfortable access to the generously sized air and button trap filters.

Loading drum with revolutionary design for exceptional drying results. Thanks to built-in flexibility the models XL8012E, XL8012S, XL8015E and XL8015S Series can be programmed to operate continuous distillation or occasional distillation as required. An independent double circuit solvent filtration system is available.

Gravitational two stage water separator with level control sight-glasses available. Also available to this model is the self regenerating **RECUPER** deodorising system, built into the **SMART** Series, to minimize solvent emissions.

All models are provided with inverter electronic control to regulate the speed of the cage rotation, increasing flexibility to clean fur coats and leathers. The main components are built in stainless steel and the critical pipelines in brass and stainless steel.

Easy access is provided to the pneumatic valves to facilitate service if required.

Well proven, high capacity solvent pump for best and fast cleaning process.



The Ideal Drycleaning System.

UNION XL8018E, XL8018S, XL8025E, XL8025S Series, space saver Fast. Smart. Clean.



Exceptional cleaning, economy and ecological performance is achieved in the new UNION XL8018E, XL8018S, XL8025E and XL8025S, perfect for workshops with limited floor space, or with two or three tanks on a larger front design.

UNION XL8018 and XL8025 models are designed to work with continuous distillation cycles or occasional distillation when required. An independent double circuit solvent filtration system is available.

The distillation can be steam fed or alternatively the machine can be supplied with a built-in mini boiler adequately regenerating the appropriate amount of cleaning solvent before the end of each cycle.

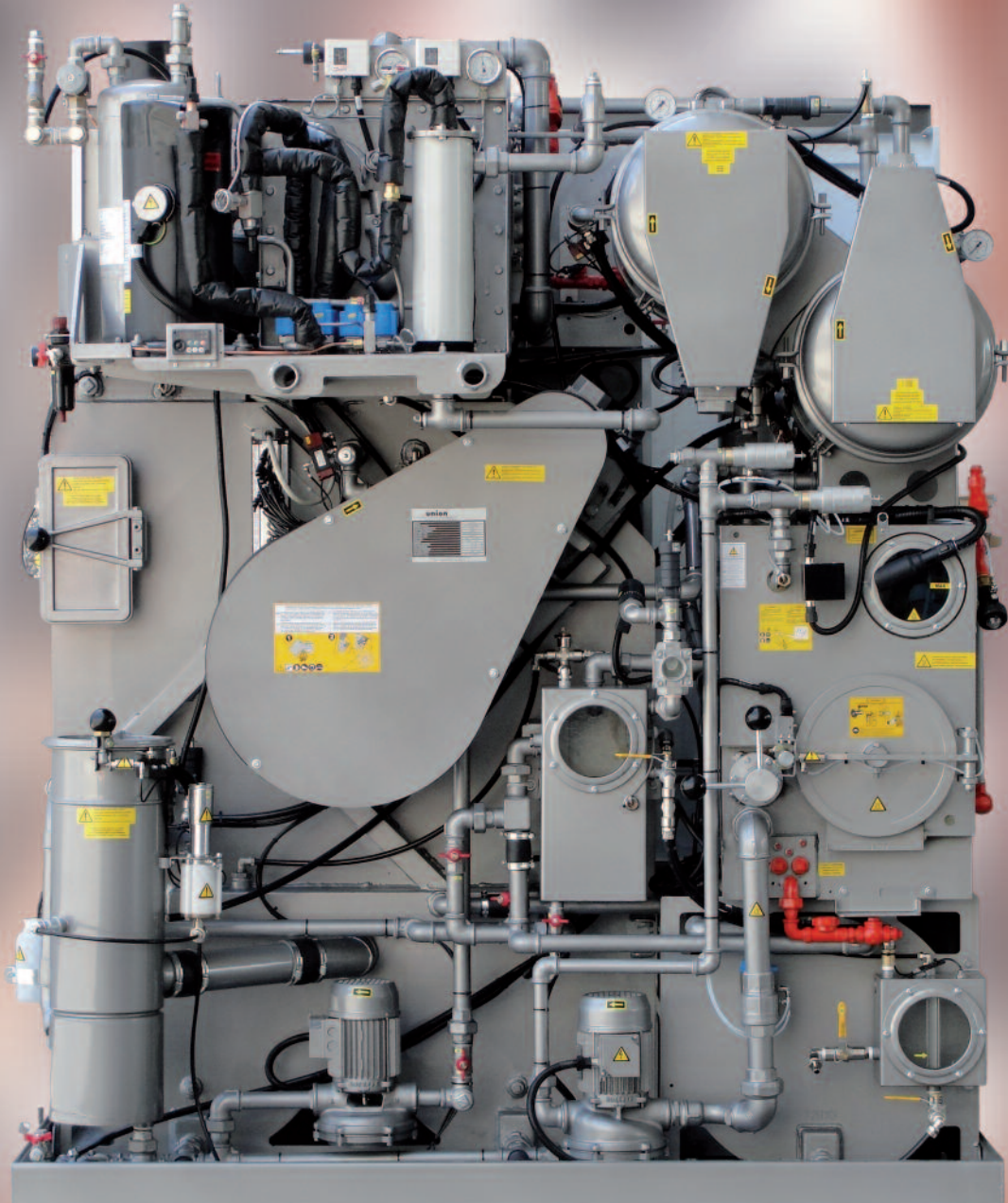
UNION XL8018 and XL8025 offer considerable reduction to occupied space. They also include all standard UNION innovations and exclusive technical features available in the UNION products.

DIALOG Computer for an easy to use drycleaning system. Convenient access to the generously sized double lint filters and to the external self drying button trap. The water separator is equipped with sight-glasses for easy inspection.



The Ideal Drycleaning System.

UNION XL8018E, XL8018S, XL8025E, XL8025S Series, space saver Fast. Smart. Clean.



All Union models XP-XL 8000 Series are fitted with still maximum level sensors. The still level alarm is indicated in the **DIALOG** computer display. To ensure adequate maintenance of the still, all models are available with the automatic cleaning system **IDROMATIC**. Selecting the **IDROMATIC** programme discharges all still waste into the approved waste container without any contact with the operator since for daily maintenance opening the still door is not necessary. Compact construction for easy access to the control board and all electrical components inside. Rational and ergonomic machine configuration allows easy access to all components enabling fast maintenance. Nylon rotary Ecological disk filters can be combined with active carbon filters. All models can be equipped on demand with **ARTIC LINE** refrigerator control system of the solvent temperature which is ideal when cleaning delicates and leather clothes. The **RECUPER** deodorisation system can be added to all Union models in the XL-XP 8000 series. Combining the action of refrigeration and the absorption power of Active Carbons, all odours from garments will be eliminated before removing them from the cage.



The Ideal Drycleaning System.

Technical Specifications

		XP8012E	XP8015E	XP8018E	XL8012E	XL8012S	XL8015E	XL8015S	XL8018E	XL8018S	XL8025E	XL8025S
LOAD CAPACITY	Kg	12	15	18	12	12	15	15	18	18	25	25
BASKET												
Volume	lt	221	285	340	221	221	285	285	340	340	500	500
Diameter	mm	800	800	900	800	800	800	800	900	900	1000	1000
Depth	mm	440	560	535	440	440	560	560	535	535	640	640
Wash speed	rpm	20-50	20-50	20/50	20-50	20-50	20-50	20-50	20/50	20/50	20/50	20/50
Extract speed	rpm	300-450	300-450	300/400	300-450	300-450	300-450	300-450	300/400	300/400	300/400	300/400
Door opening	mm	500	500	500	500	500	500	500	500	500	500	500
TANKS												
Useful volume tank 1	lt	85	105	118	85	85	105	105	118	118	145	145
Useful volume tank 2	lt	85	105	118	85	85	105	105	118	118	145	145
Useful volume tank 3	lt	-	-	-	-	120	-	120	-	160	-	195
STILL												
Useful still volume at half inspection	lt	144	144	144	145	145	145	145	145	145	190	190
Total Still Volume	lt	164	164	164	180	180	180	180	180	180	224	224
NYLON FILTER												
Volume nylon filter housing	lt	35	35	55	35	35	35	35	55	55	55	55
Nylon filter area	mt ²	2,1	2,1	3,9	2,1	2,1	2,1	2,1	3,9	3,9	3,9	3,9
Filter disks	nr	14	14	26	14	14	14	14	26	26	26	26
CARTRIDGE FILTER - PR												
Volume filter housing	lt	13	13	13	13	13	13	13	13	13	13	13
Tubes numbers	nr	1	1	1	1	1	1	1	1	1	1	1
VOLUME CARTRIDGE FILTER - KR												
Volume cartridge filter KR	lt	35	35	55	35	35	35	35	55	55	55	55
Tubes numbers	nr	1	1	1	1	1	1	1	1	1	1	1
Cartridges quantity	nr	1	1	2	1	1	1	1	2	2	2	2
ELECTRIC POWER												
Working power (ELECTRIC HEATED)	Kw	16,5	16,5	23,5	16,5	16,5	16,5	16,5	23,5	23,5	26	26
Wash / extract motor	Kw	*0,6-3	*0,6-3	*1,3-3,5	*0,6-3	*0,6-3	*0,6-3	*0,6-3	*1,3-3,5	*1,3-3,5	*2÷5,63	*2÷5,63
Solvent pump motor	Kw	0,55	0,55	0,75	0,55	0,55	0,55	0,55	0,75	0,75	0,75	0,75
Fan motor	Kw	1,5	1,5	1,5	1,5	1,5	1,5	1,5	1,5	1,5	1,5	1,5
Fridge compressor	Kw	2,5	2,5	3,75	2,5	2,5	2,5	2,5	3,75	3,75	3,75	3,75
Nylon filter motor drive	Kw	0,55	0,55	0,55	0,55	0,55	0,55	0,55	0,55	0,55	0,55	0,55
Idromatic pump	Kw	0,55	0,55	0,55	0,55	0,55	0,55	0,55	0,55	0,55	0,55	0,55
Air compressor	Kw	0,38	0,38	0,38	0,38	0,38	0,38	0,38	0,38	0,38	0,38	0,38
Fan motor RECUPER System	Kw	0,55	0,55	0,55	0,55	0,55	0,55	0,55	0,55	0,55	0,55	0,55
Drying heating element (with/without Turbostill)	Kw	3,9/5,85	3,9/5,85	9	3,9/5,85	3,9/5,85	3,9/5,85	3,9/5,85	9	9	9	9
Still heating element	Kw	7,5	7,5	7,5	7,5	7,5	7,5	7,5	7,5	7,5	9	9
Working power (STEAM HEATED)	Kw	5,5	5,5	7	5,5	5,5	5,5	5,5	7	7	8	8
MACHINES WEIGHTS (STANDARD)												
Empty machine weight	Kg	1070	1115	1500	1090	1110	1140	1160	1550	1580	1970	2000
Machine weight with solvent	Kg	1518	1563	2066	1538	1782	1588	1832	2104	2390	2658	2994
Static charge on the floor with solvent	Kg/mt ²	745	767	783	730	846	754	870	779	885	759	855
Dynamic charge on the floor (+10%)	Kg/mt ²	965	1025	1095	945	1070	1000	1130	1038	1155	1051	1156
MACHINES WEIGHTS U2000												
Empty machine weight	Kg	1150	1195	1600	1170	1190	1220	1240	1630	1660	2070	2100
Machine weight with solvent	Kg	1598	1643	2154	1618	1862	1668	1912	2184	2482	2758	3094
Static charge on the floor with solvent	Kg/mt ²	784	807	816	768	884	792	908	809	919	788	884
Dynamic charge on the floor (+10%)	Kg/mt ²	1005	1065	1083	985	1110	1045	1170	1071	1187	1082	1188
MACHINES DIMENSIONS												
(A) Width front Machine4	mm	1000+124	1000+124	1200+154	1560+154	1560+154	1560+154	1560+154	1800+154	1800+154	2000+154	2000+154
(B) Depth	mm	2200	2200	2240	1450+60	1450+60	1450+60	1450+60	1650	1650	1900	1900
(C) Height	mm	2065	2065	2170	2065	2065	2065	2065	2170	2170	2240	2240

Note: Acoustic emission level of the machines is lower than 70 dB (A)
Specifications subject to change without notice



UNION S.p.A.
Via Labriola, 4/d
40010 Sala Bolognese (Bologna) Italy
Tel. +39.051.68.14.996 - Fax +39.051.68.14.660
E-mail: union@uniondcm.com
Web site: www.uniondcm.com